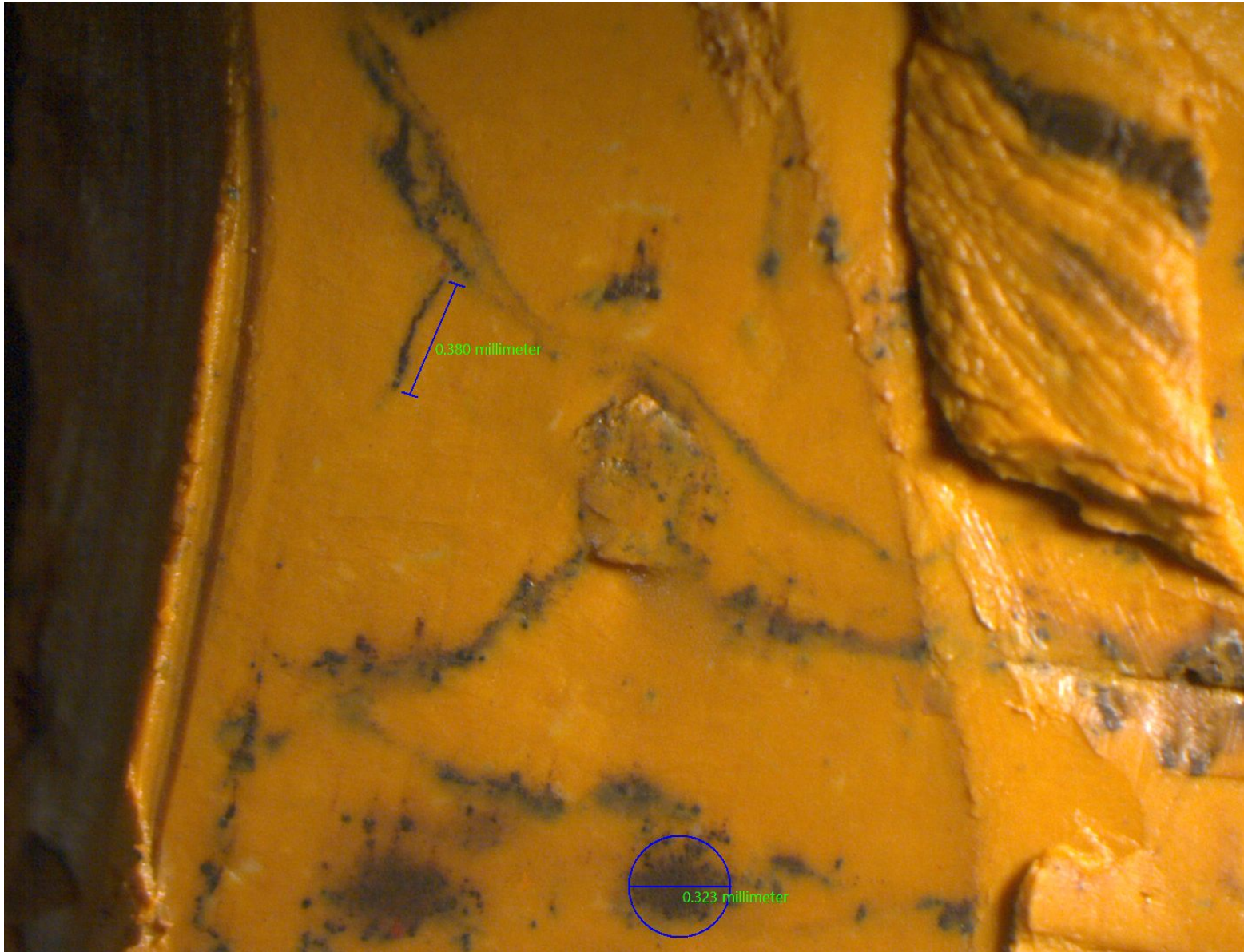


## High energy, high flow techniques distribute in fine-grained geology



This is a picture of 2.25-inch direct push cores sliced vertically. The black inclusions are BOS 200®. It is visually evident that the BOS 200 has distributed well using high energy, high flow techniques.

# High energy, high flow techniques distribute in exceedingly fine-grained geology



Low energy, low flow techniques cannot distribute in fine-grained geologies because only 5-23% of clays' "natural" fractures are hydraulically active (Klint et al., 2001; Jorgensen et al., 2003).

Those who represent, even in print, that they can use low flow, low energy injection and retrace the natural fractures present at the time of the contaminant's release are mistaken at best.