

WESTERN KENTUCKY CHEMICAL PLANT

BALANCING THE PUBLIC INTEREST WITH CLIENT RESOURCES

ABSTRACT

The subject site is a former Chemical Plant that stored, repackaged and distributed chemicals, including but not limited to hydrogen peroxide, methylisobutyl carbinol (MIBC), tetrachloroethene (PCE), acetone, ethanol and diesel fuel. A combination of ex-situ and in-situ remediation methods were selected in order to achieve the site clean-up goals.

PROJECT SNAPSHOT

Key Dates

- Remedial Design Characterization (RDC) – Three phases 2011-2013
- Injection of BOS 100® – Fall/Winter 2013
- Injection of CAT 100 - Winter 2016 (Pilot), Fall 2018

Treatment Area (Figure 1): 19,000 ft² (PRB length = 300 ft)

Lithology: fat clay with sparse silt and very fine sand stringers. Clay exhibits low moisture and low permeability ($\sim 1 \times 10^{-7}$ cm/s).

Depth to Water: Approximately 20 ft below ground surface (bgs)

Contaminants: Mixed plume but primarily chlorinated ethenes

Implementation Method: Direct push injection and shallow soil mixing

CHALLENGES & OBJECTIVES

The challenges for this project included a difficult geology (tight clays), a mixed contaminant plume, and source area level concentrations. The primary objective was to design a multi-year remedy that was affordable and effective. The initial plan to mitigate risk at the facility was to limit offsite plume migration. The remediation technologies being evaluated and implemented had to take into consideration longevity and efficiency to maximize available funding and installation opportunities.

APPROACH

Forty-Four (44) RDC soil borings were advanced at the Site; 880 soil and 95 groundwater samples were submitted to the RPI Project Laboratory where sample analyses are completed at no cost.

Based upon the RDC results, the initial remedy included shallow soil mixing (sodium persulfate) and BOS 100®. A second phase that included CAT 100 was implemented in Fall 2018.

- Phase 1: 22,050 lbs of BOS 100® was applied into 233 injection locations from 20 to 40 ft bgs.
- Phase 2: 6,700 lbs of sodium persulfate (lime activation) was blended into the shallow soils from grade to 4 ft bgs.
- Phase 3: 9,000 lbs of CAT 100 was applied into 73 injection locations from 20 to 40 ft bgs.
- Phase 4: 10,000 lbs of CAT 100 was applied into 71 injection locations from 20 to 40 ft bgs.

RESULTS

Results from the RDC supported and verified that indiscriminate high-density sampling for quantitative analysis in the laboratory allowed for an efficient surgical treatment during remediation with predictable expectations. The soil and groundwater investigation also supported the existing Conceptual Site Model (CSM) which indicated the contaminant plume was being geologically controlled by low-permeability fat clays.

CVOCs concentrations in the downgradient monitoring well (PDC-3) were reduced by over 95% and recent PCE level is below 0.5 ppb. It is important to note that immediately following injection the concentration of PCE decreased (carbon adsorption). However, the reductions have maintained with time (Figure 2), indicating that the BOS 100® is managing contaminant back diffusion from the soil matrix. Degradation end by-products ethylene and ethane remain elevated and suggest that total contaminant reduction is ongoing.

NEXT STEPS

The original remediation strategy specified the use of Trap & Treat® BOS 100® for all phases of in-situ remediation. As this project evolved, CAT 100 was developed and implemented as a pilot study in the source area of the site. Given the success in the pilot of mitigating DNAPL impacts, CAT 100 has been selected as the primary remedial strategy to further reduce source impacts remaining at the site. Phase 4 is scheduled to be completed in late Fall 2019 and Phase 5 is to be completed in late 2020 or early 2021.

DIAGRAMS

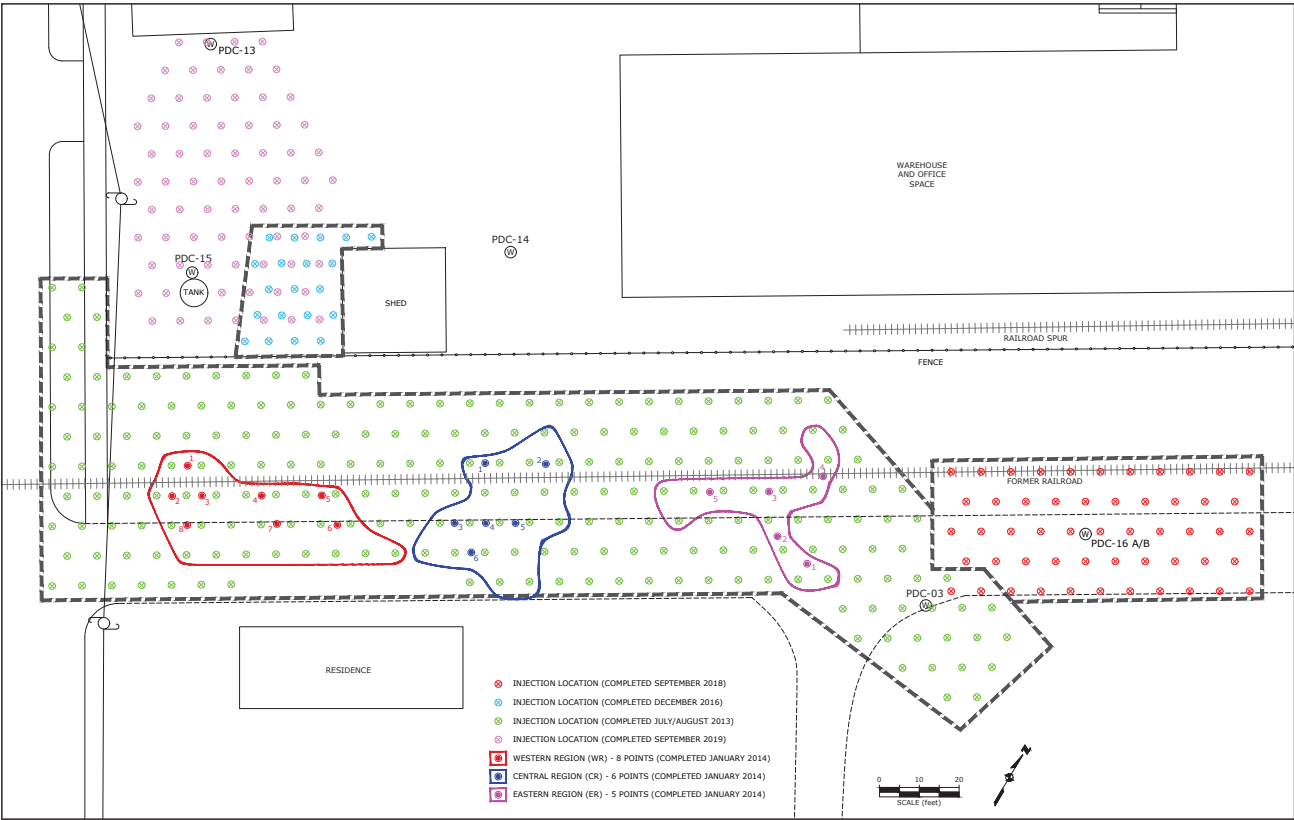


Figure 1. Site Map

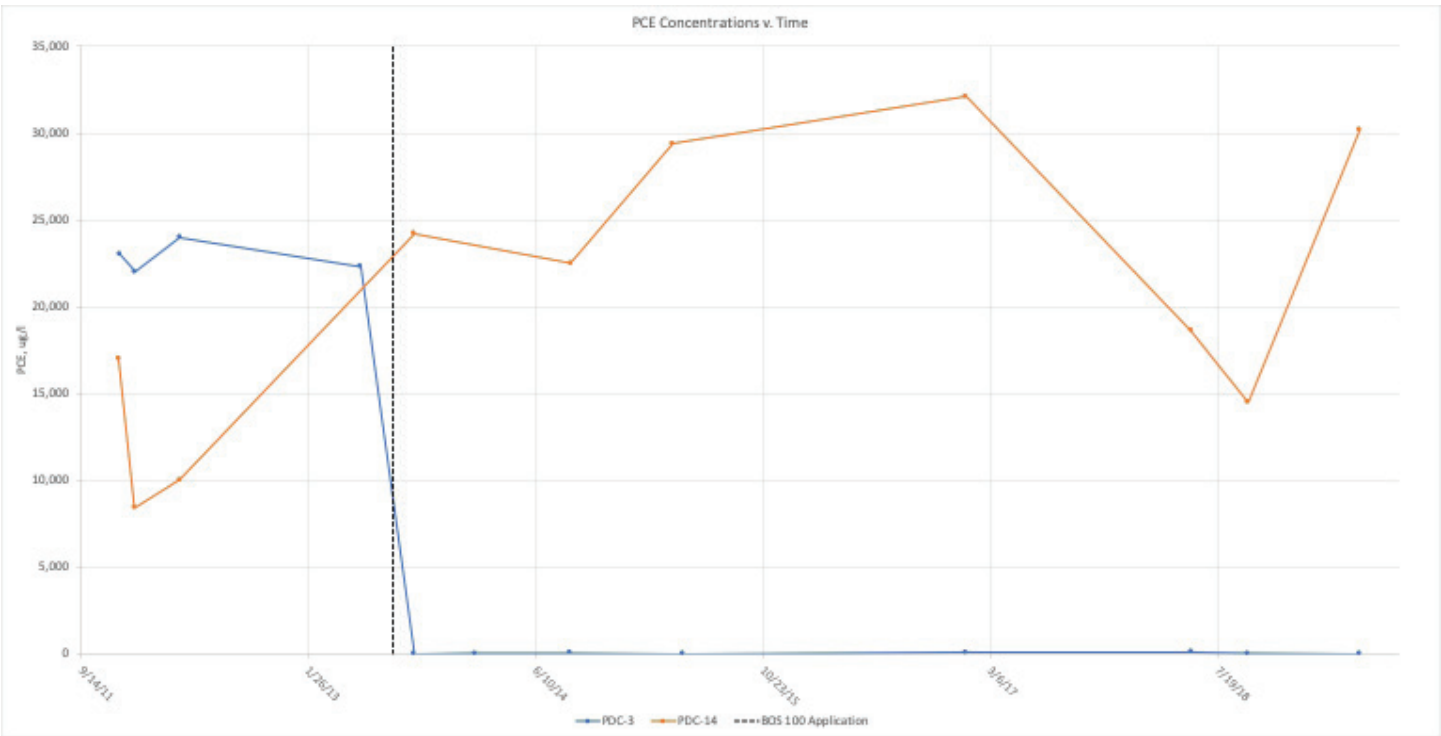


Figure 2. Upgradient (PDC-14) & PRB (PDC-3) PCE Concentrations v. Time